




FRESH KILLS

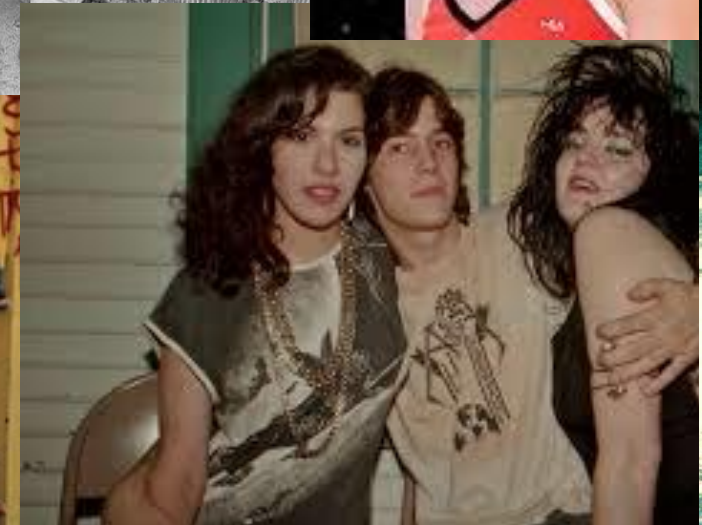
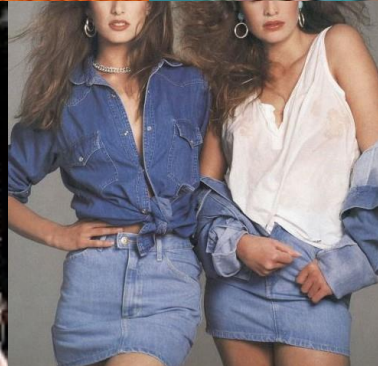
MOOD BOARD/WARDROBE

CHANTAL FILSON

A cinematic photograph of two young women in profile, facing each other. The woman on the left has long, wavy blonde hair and is wearing a dark, patterned top. The woman on the right has voluminous, curly reddish-brown hair and is wearing a dark leather jacket. They are both holding lit matches to their lower lips, with the flames touching in the center. The background is a textured, light-colored wall. The lighting is warm and intimate, creating a dramatic and romantic atmosphere.

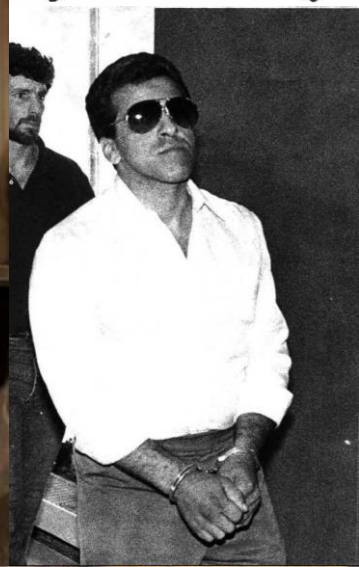
i'll tell you a secret, Rose

nothing will touch us



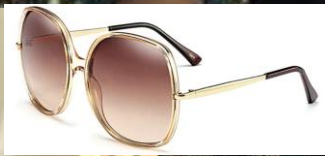
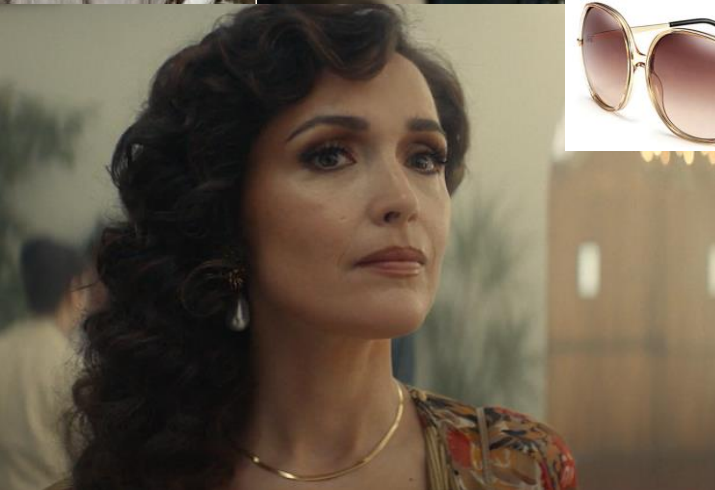


- Streamlined period style to keep it classic/real
- Color palette of gold, saffron, gray and slate blue with accents of burgundy/blush/brown
- A focus on texture (leather, satin, knit, suede)



He wanted to
take my pictures
because I was a
star.







CHANTAL FILSON

www.cfilson.com
cfilson@gmail.com